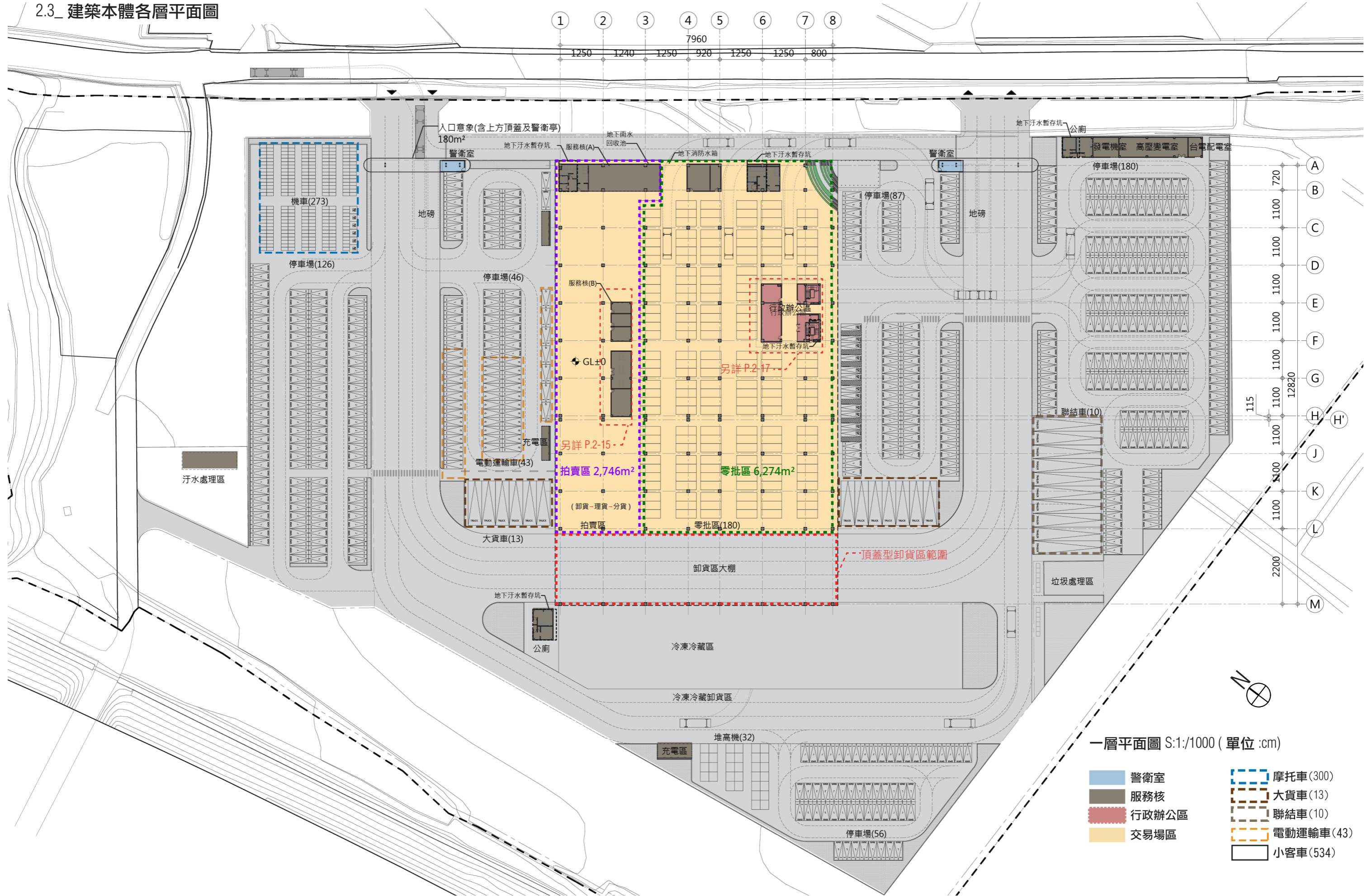


2.2\_全區配置圖



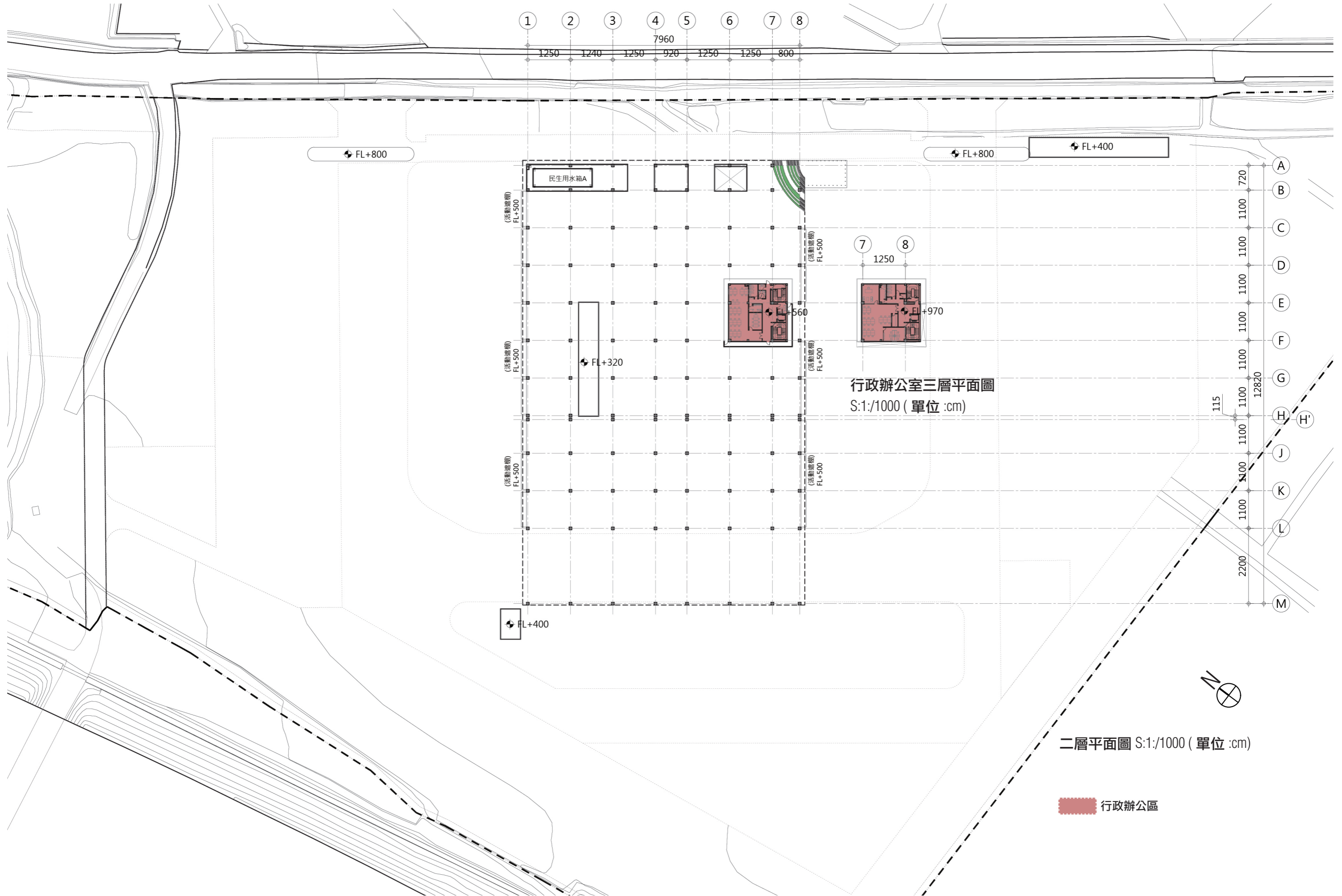
全區平面配置圖 S:1/1500

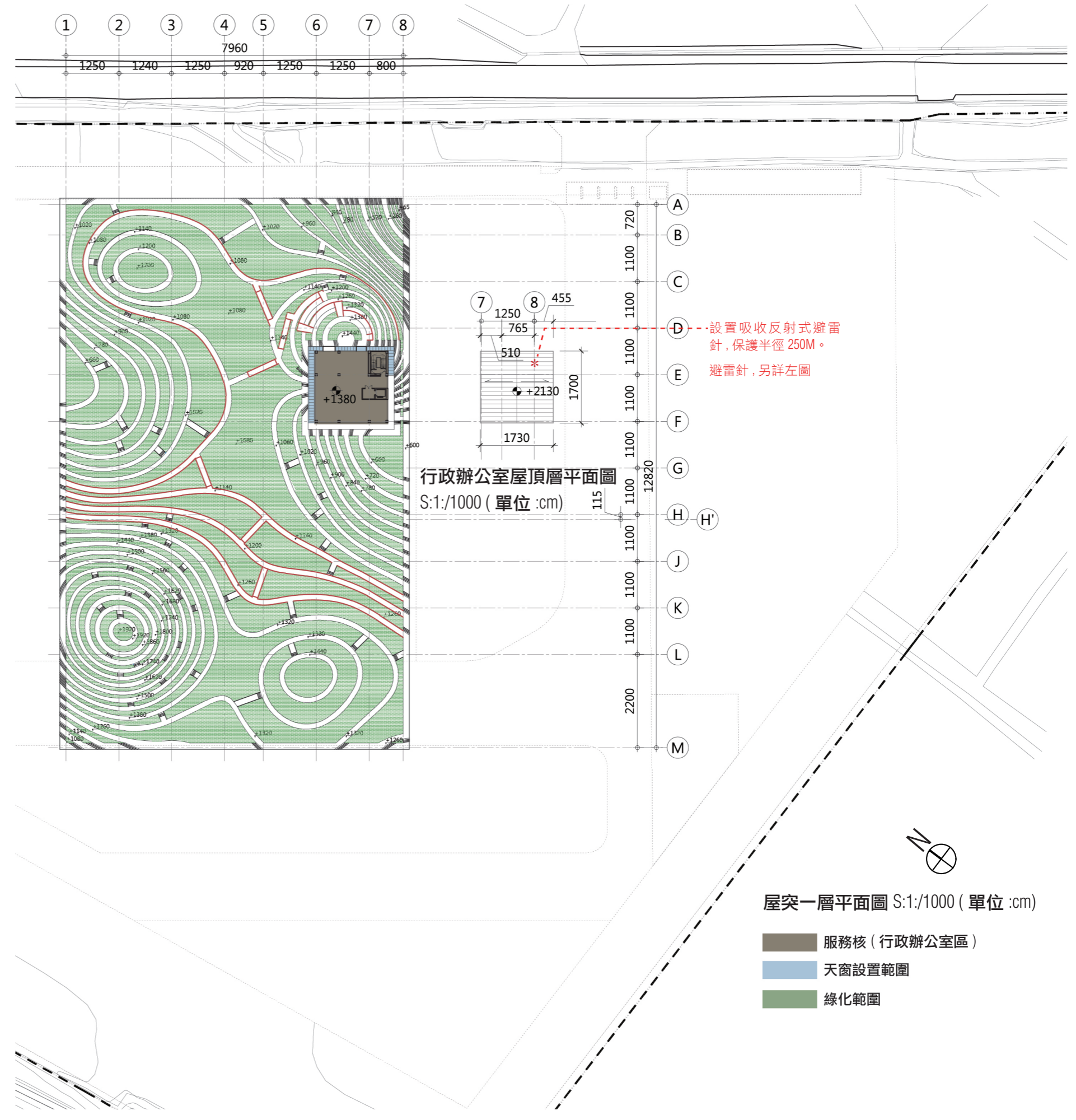
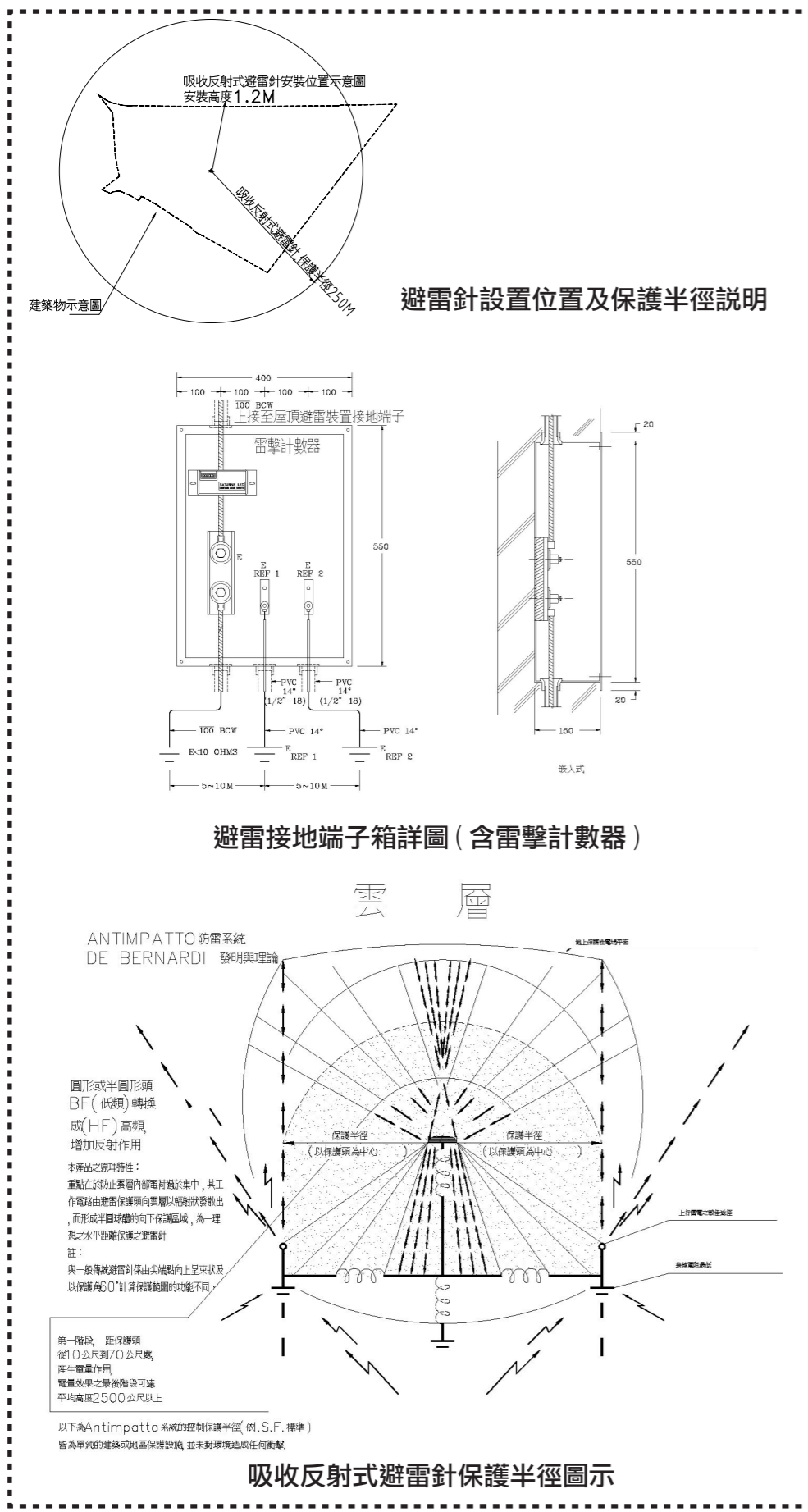
2.3\_ 建築本體各層平面圖



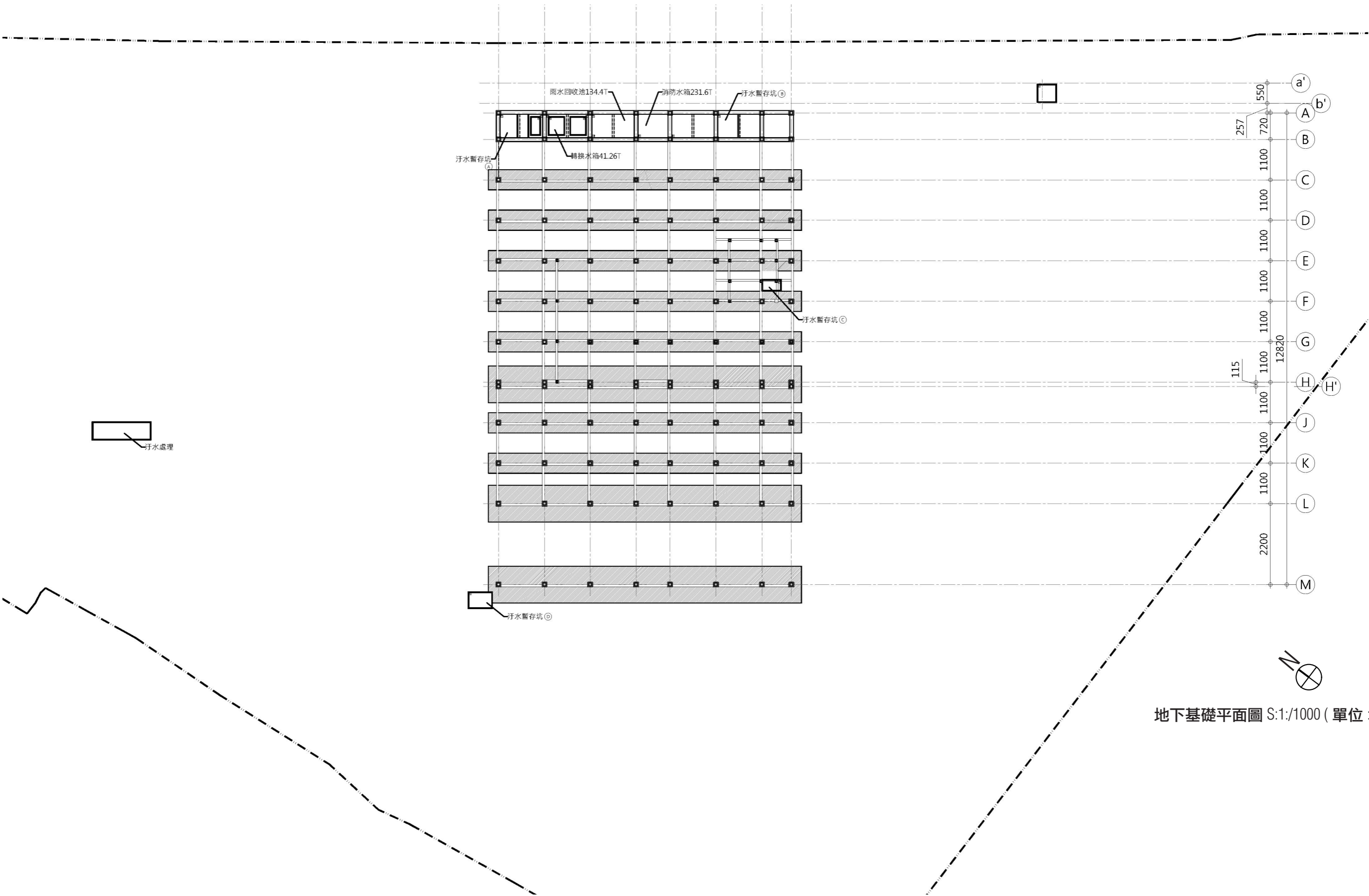
一層平面圖 S:1/1000 (單位 :cm)

- |   |  |
|---|--|
| <span style="display:inline-block; width:15px; height:15px; background-color:blue; border:1px solid black;"></span> 警衛室         | <span style="display:inline-block; width:15px; height:15px; border:2px dashed blue;"></span> 摩托車(300)    |
| <span style="display:inline-block; width:15px; height:15px; background-color:gray; border:1px solid black;"></span> 服務核         | <span style="display:inline-block; width:15px; height:15px; border:2px dashed orange;"></span> 大貨車(13)   |
| <span style="display:inline-block; width:15px; height:15px; background-color:lightcoral; border:1px solid black;"></span> 行政辦公區 | <span style="display:inline-block; width:15px; height:15px; border:2px dashed gray;"></span> 聯結車(10)     |
| <span style="display:inline-block; width:15px; height:15px; background-color:yellow; border:1px solid black;"></span> 交易場區      | <span style="display:inline-block; width:15px; height:15px; border:2px dashed orange;"></span> 電動運輸車(43) |
|   | <span style="display:inline-block; width:15px; height:15px; border:1px solid black;"></span> 小客車(534)    |

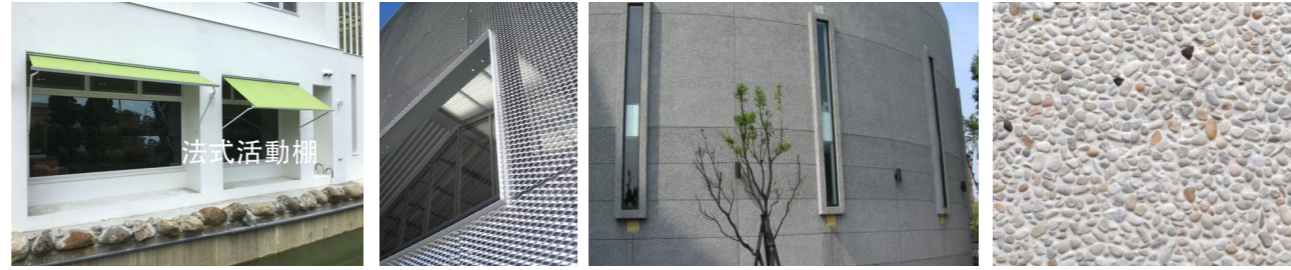




吸收反射式避雷設備規範：  
為減低建築物遭受直接或間接雷擊的可能性，本案採用吸收反射式避雷設備，設備須具備有中和、吸收、反射等功能。



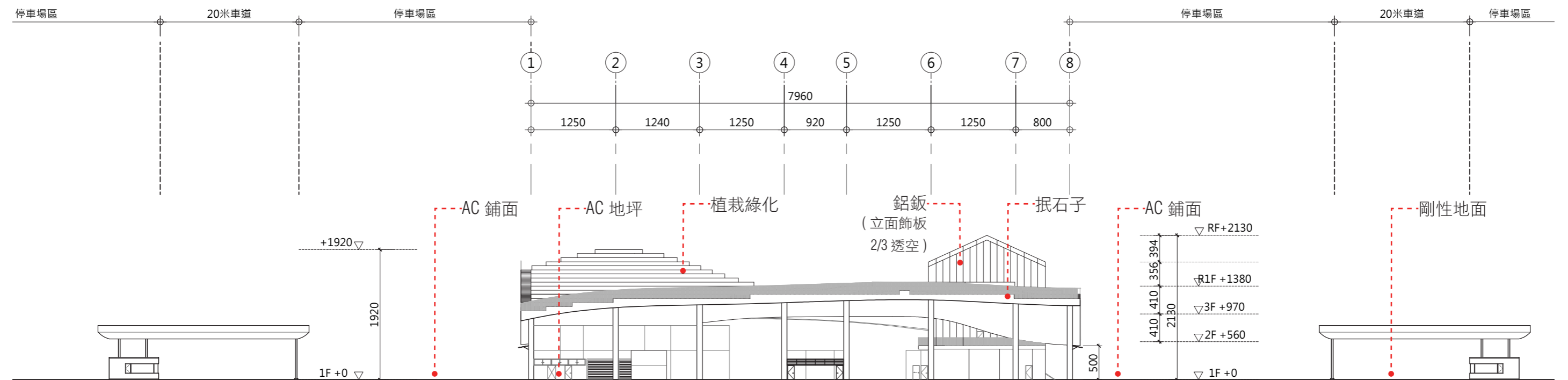
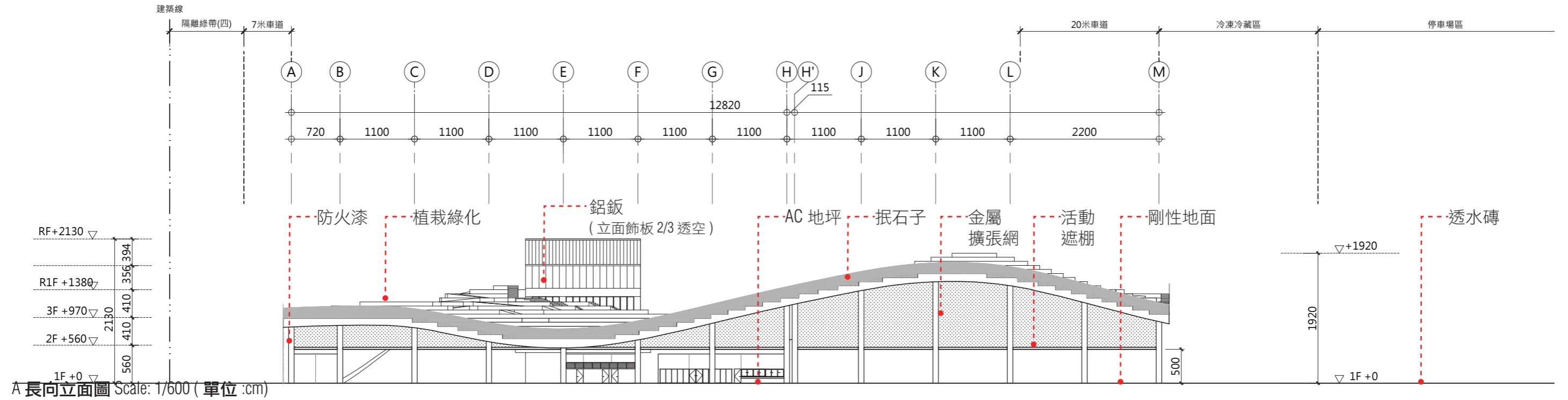
2.4\_ 建築本體各向立面圖



活動遮棚案例照片

擴張網案例照片

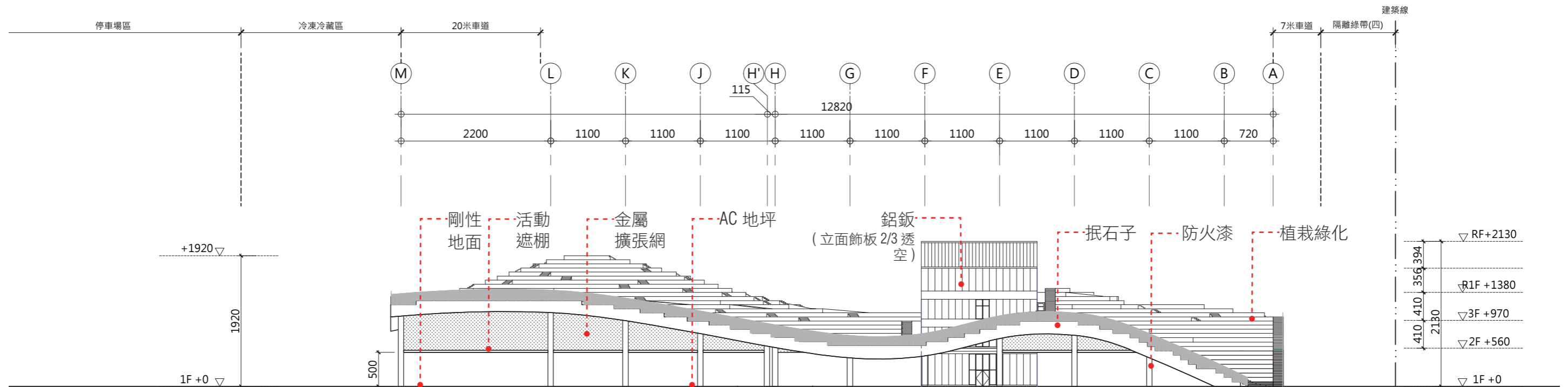
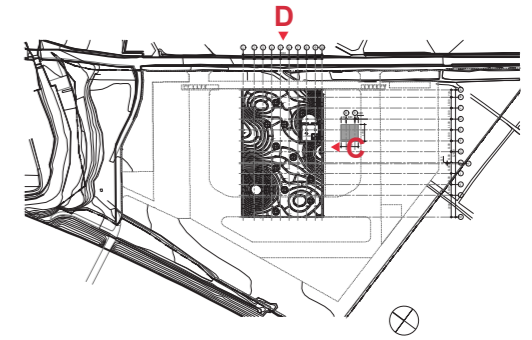
抵石子案例照片



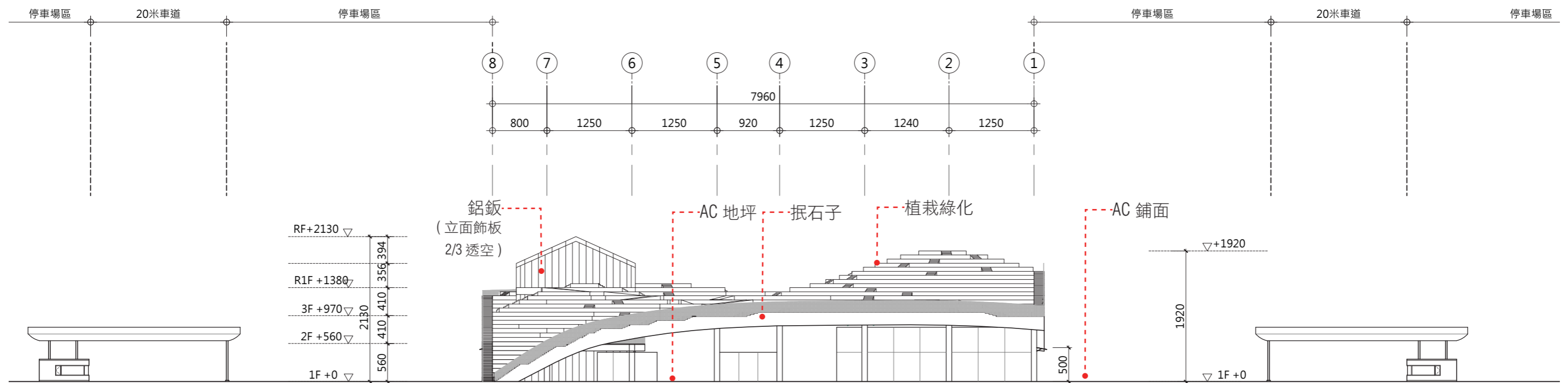
B 短向立面圖 Scale: 1/600 (單位 :cm)



辦公室立面鋁板案例照片

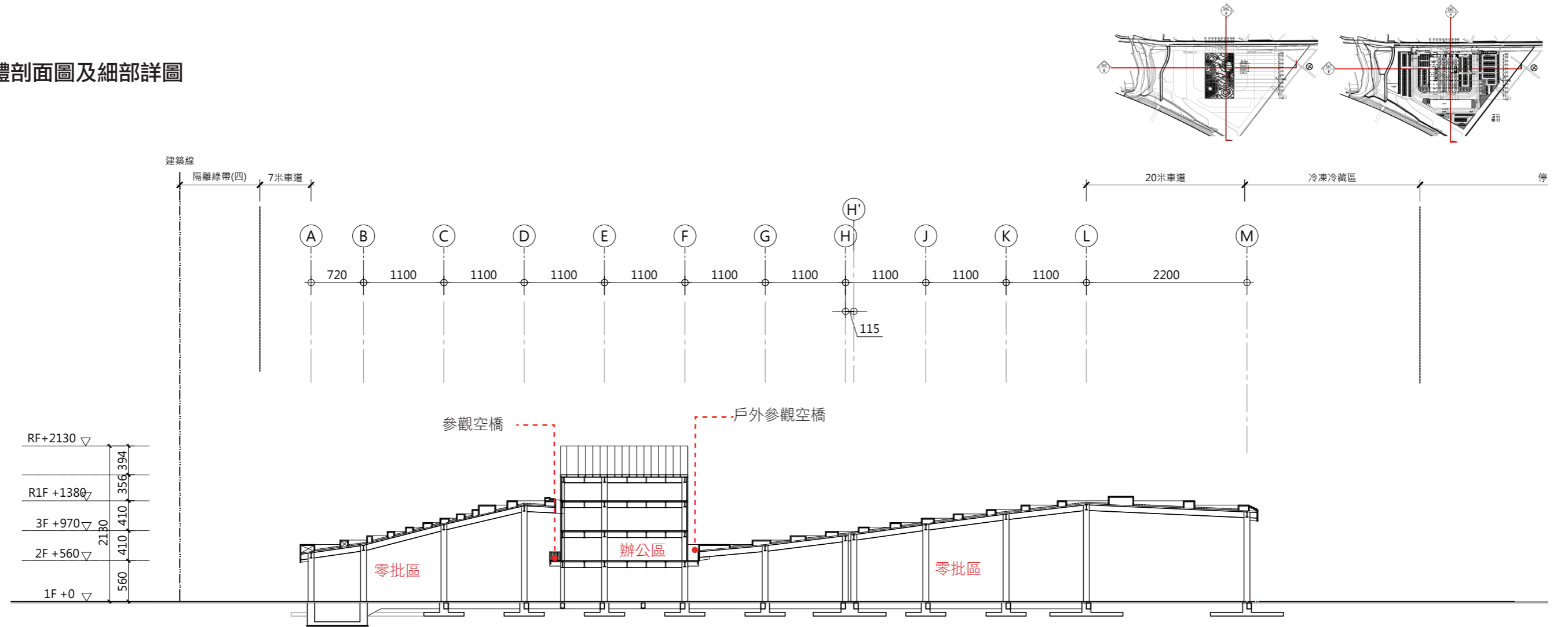


C 長向立面圖 Scale: 1/600 (單位 :cm)



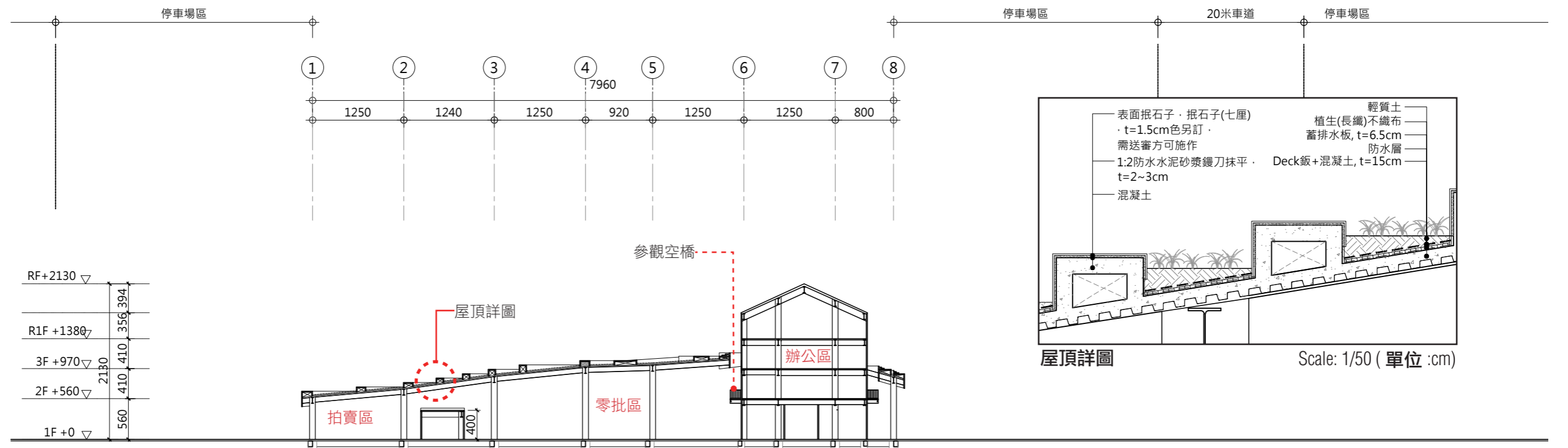
D 短向立面圖 Scale: 1/600 (單位 :cm)

2.5\_ 建築本體剖面圖及細部詳圖



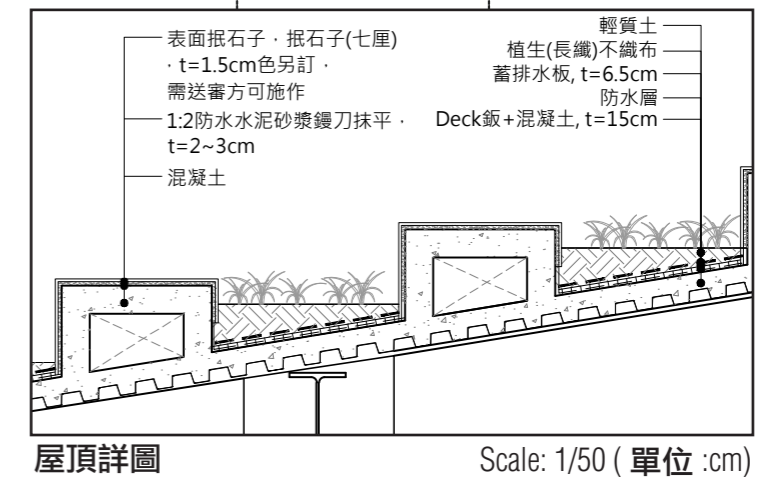
縱向剖面圖 (Section A)

Scale: 1/600 (單位:cm)



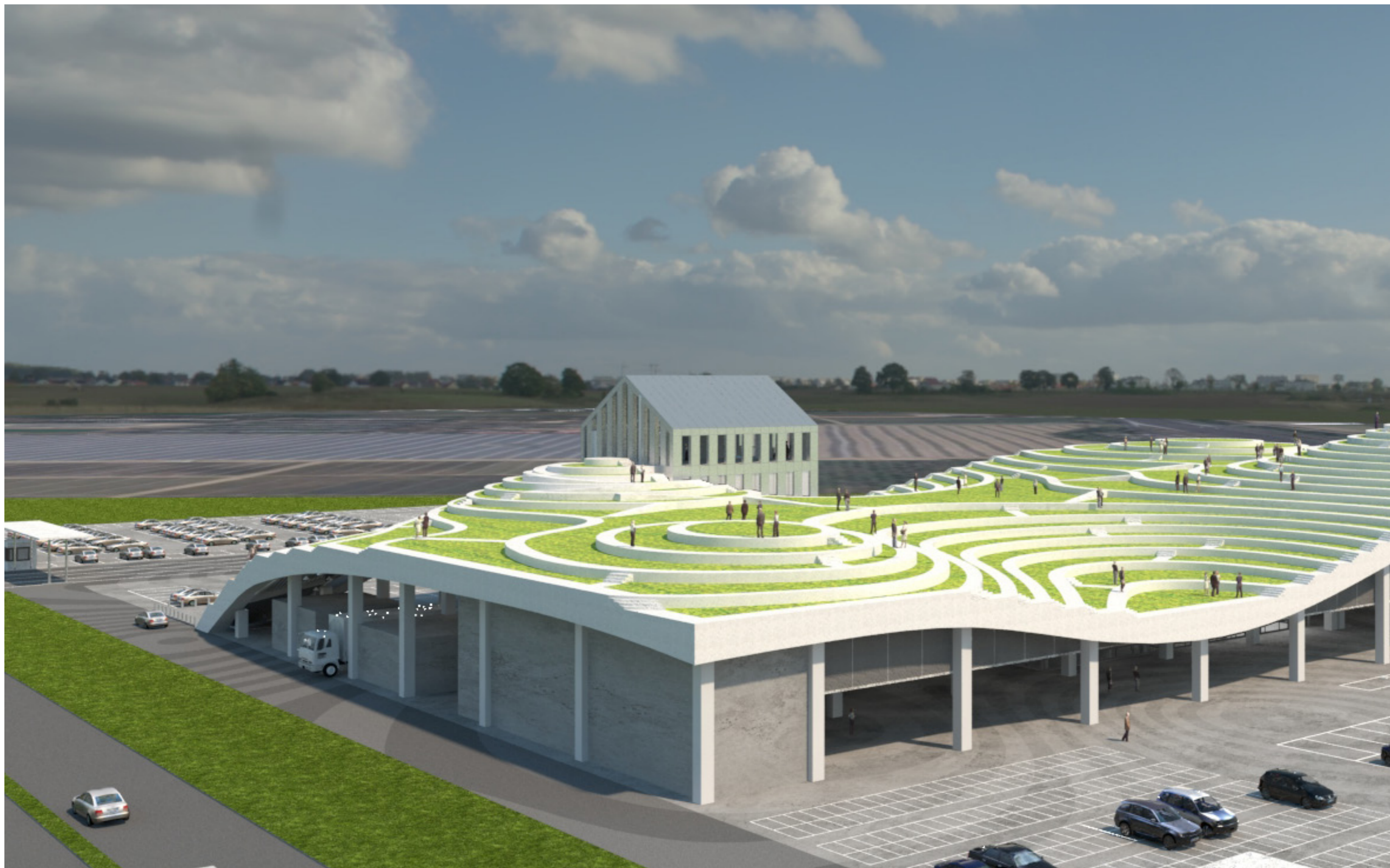
橫向剖面圖 (Section B)

Scale: 1/600 (單位:cm)

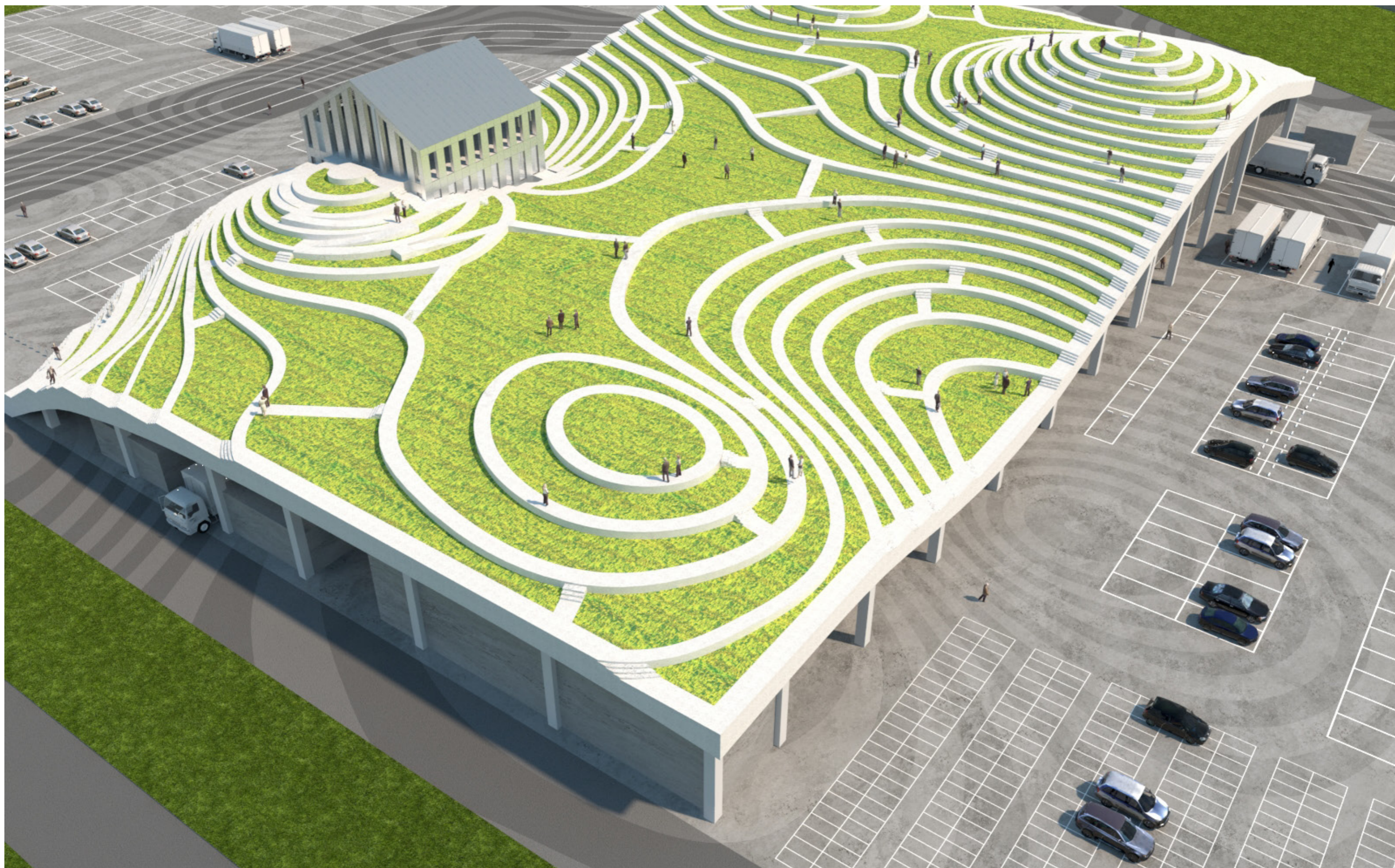




## 2.6\_ 全區透視圖

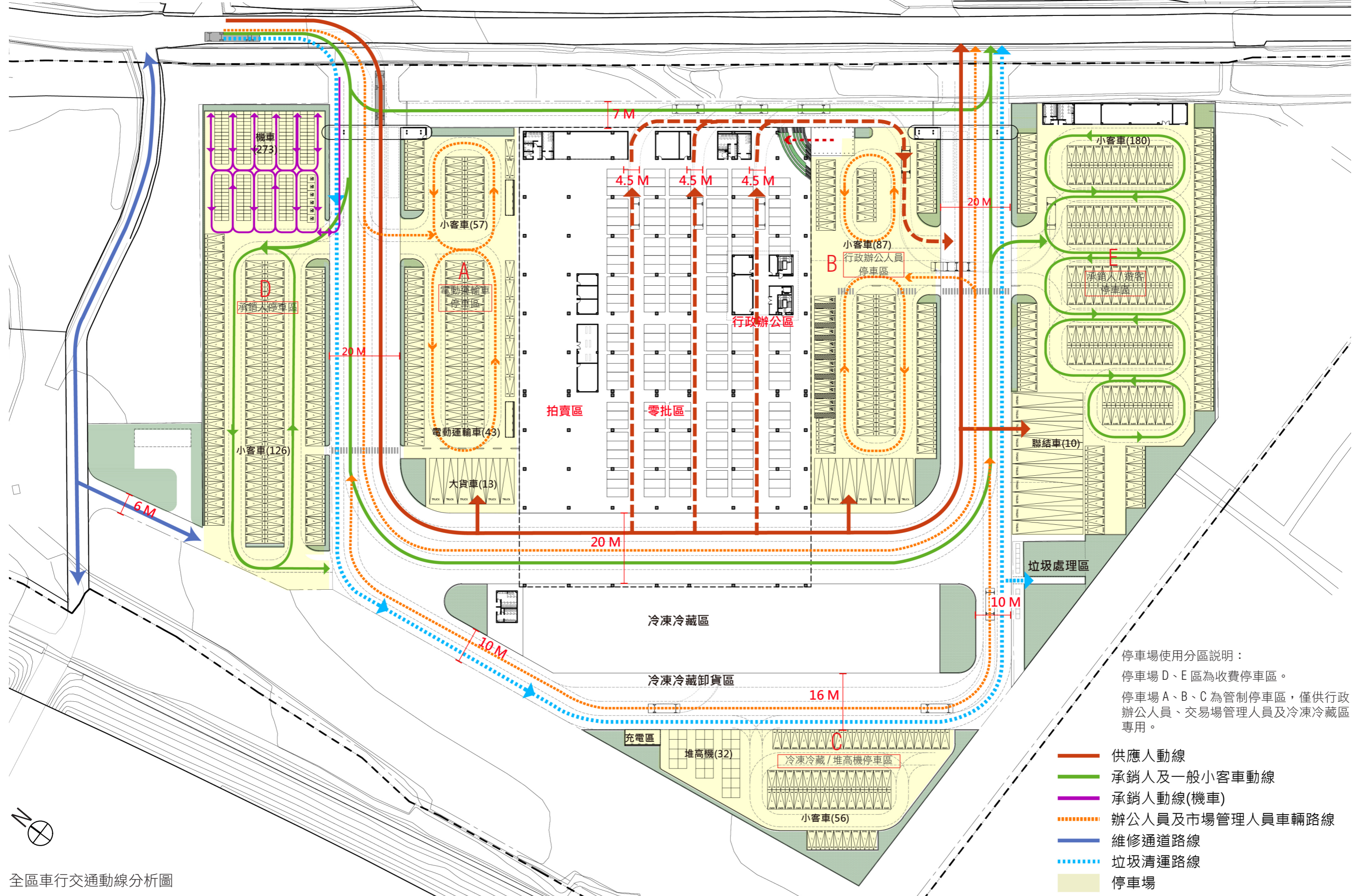


由區道 175 往果菜市場觀看之鳥瞰模擬圖

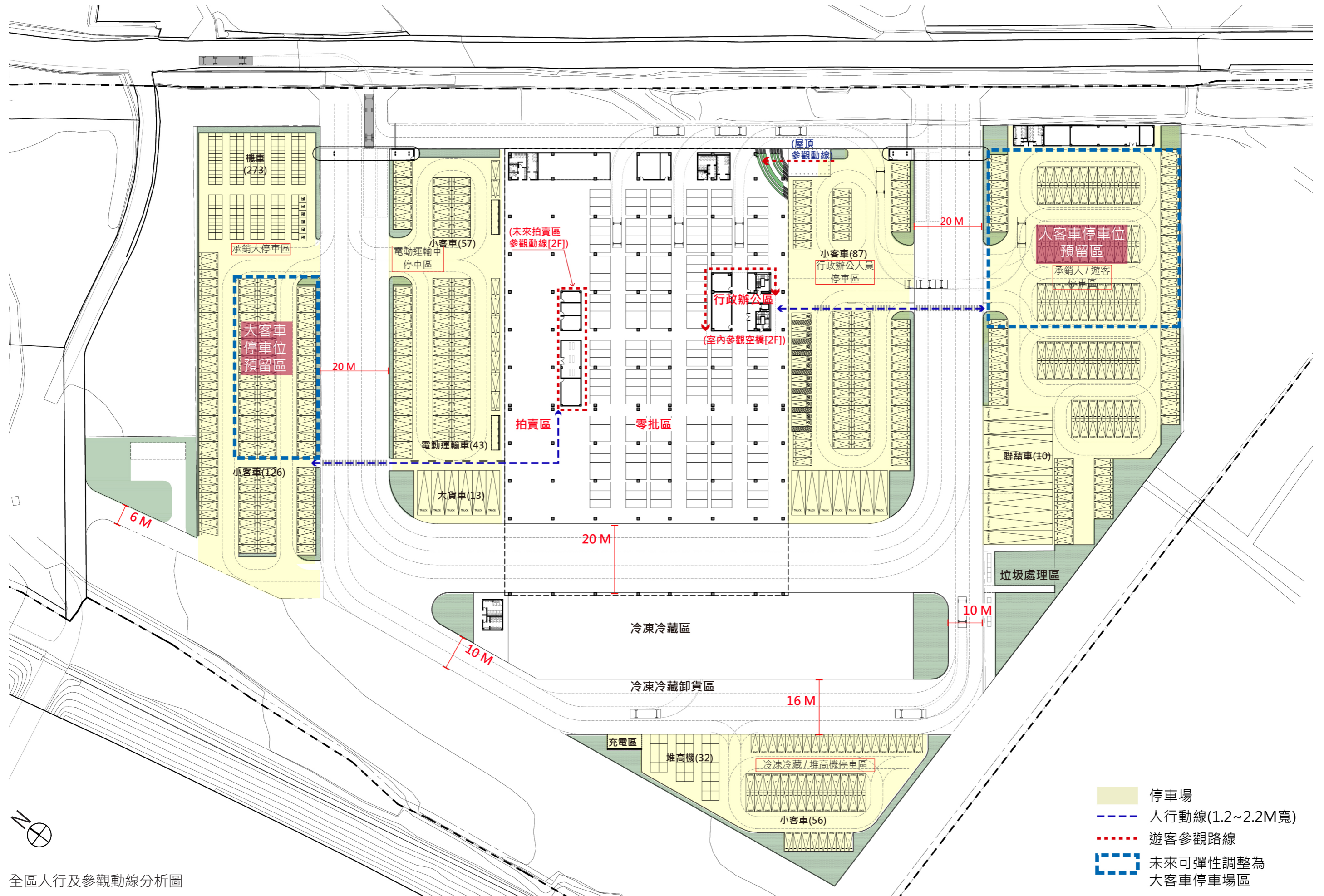


全區鳥瞰圖

2.8\_ 交通動線系統說明



全區車行交通動線分析圖



全區人行及參觀動線分析圖